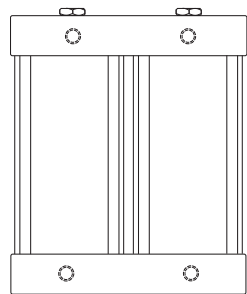
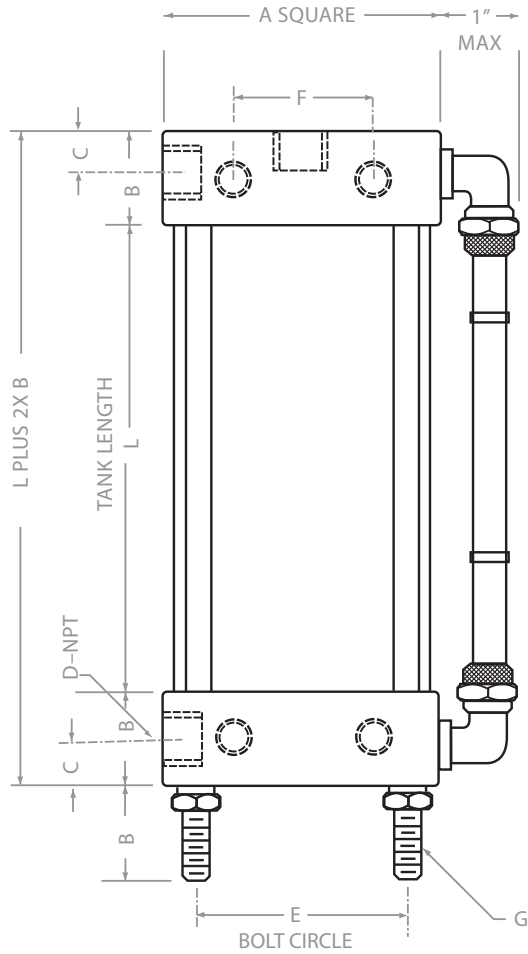


AIR-OIL TANKS

TIE RODS-STAINLESS STEEL · HEADS-ALUMINIUM · TANKS-STEEL

Shop air applied directly on the oil in an air-oil tank is a simple method to obtain smooth hydraulic feeding action. The circuits are self-bleeding as the tank should be mounted higher than the cylinder.



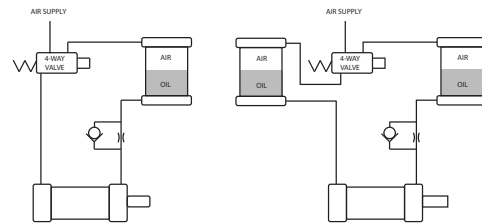
DUAL AOTs AVAILABLE UPON REQUEST

TANK HEIGHT (inches)	TANK SIZE (diameter in inches)		
	1 1/2"	2 1/2"	4"
	MOVING OIL DISPLACEMENT		
4	3.5	9	12
5	5	14	23
6	6.8	18	34
7	8	22	45
8	9.5	27	56
9	11	32	67
10	12.5	36	78
11	14	41	89
12	16	46	100
13	17.5	51	111
14	19	55	122
15	20.5	59	133
16	22	63	144
17	24	67	155
18	26	71	161

Take moving oil displacement from Tank Selection

Chart above to obtain tank bore and height. Example: 2" bore cylinder x 6" travel area: $3.14 \times 6 = 18.84$

From Tank selection chart use 2 1/2" bore x 7" high



SINGLE AIR CIRCUIT

DUAL AIR CIRCUIT

BORE	A	B	C	D	E	F (REAR MTG)	G
1 1/2"	2"	3/4"	23/64"	1/4" NPT	2 1/8"	1/4-20 x 7/8 O.C.	10-32
2 1/2"	3"	1"	7/16"	3/8" NPT	3 1/4"	1/4-20 x 1 1/4 O.C.	1/4-20
4"	4 1/2"	1"	7/16"	1/2" NPT	4 3/4"	3/8-16 x 2 1/4 O.C.	5/16-18



LITTLE AIR GIANT

737 CHANNEL STREET · SAN PEDRO, CALIFORNIA 90731 · 800.833.0008 · WWW.LITTLEAIRGIANT.COM